

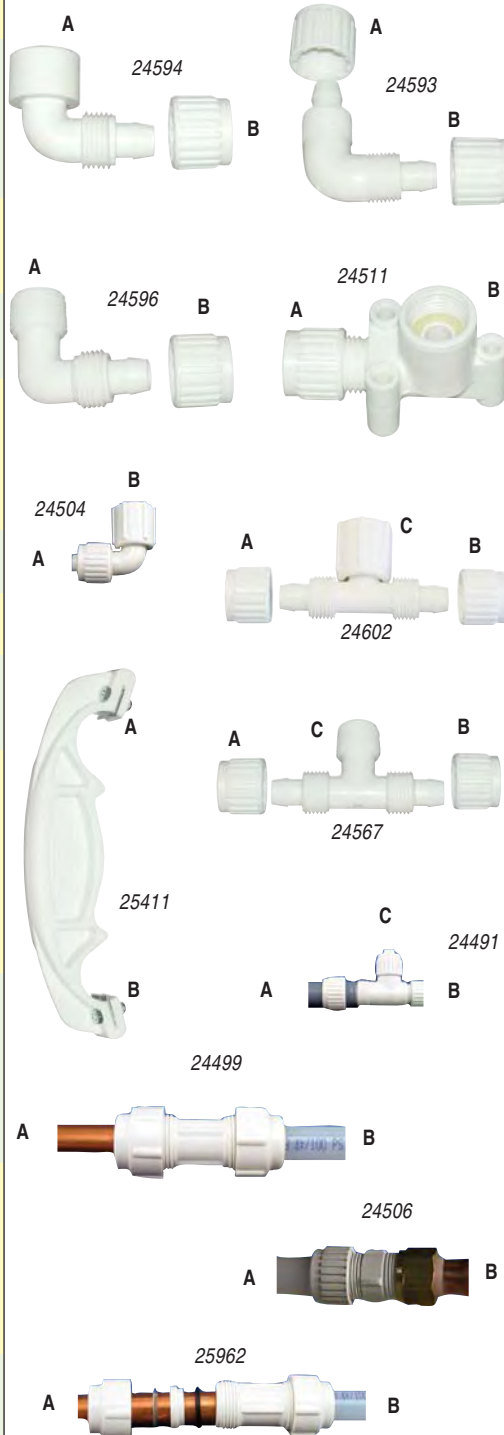
FLAIR-IT FITTINGS

FLARED - CONE & NUT FITTINGS
APPLICATIONS FOR HOT & COLD POTABLE WATER FITTINGS

For hot and cold potable water fittings (150 degrees at 100 psi). Square cut end of tubing, slide nut over tubing. Firmly press tubing onto the flare of the fitting. Slide the nut to the threads and hand tighten securely onto

the fitting. Turn 1/4 more turn with a wrench if necessary. Do not use any pipe dopes, sealants, teflon tape or other chemical on Flair-It connections. However, teflon tape should be used on male pipe threads when connecting to female threads. When connecting to brass, galvanized steel or CPVC, use a male Flair-It fitting instead of a female fitting. When connecting Flair-It fittings to a water heater in a mobile home, we recommend using a 1/2" flex copper connector off of the water heater. From a flex connector to polybutylene, use a Flair-It male adapter. Do not use in a closed loop system. Joints should not be made under concrete. Nuts are included.

| Order # | Mfr. # | Dim. A | Dim. B | Dim. C | Price |
|---------------------------------------------------|-----------|----------------|-----------------------|----------------------------------------|-------|
| FLAIR-IT FEMALE ELBOW FITTINGS | | | | | |
| 24594 | #06802 | 1/2" FPT | 1/2" FL | | |
| FLAIR-IT ELBOW FITTINGS | | | | | |
| 24593 | #06815 | 3/8" FL | 3/8" FL | | |
| 24496 | #06800 | 1/2" FL | 1/2" FL | | |
| 24497 | #06805 | 1/2" FL | 3/4" FL | | |
| 24498 | #06806 | 3/4" FL | 3/4" FL | | |
| FLAIR-IT MALE ELBOW FITTINGS | | | | | |
| 24596 | #06803 | 1/2" MPT Elbow | 1/2" FL | | |
| 24598 | #06810 | 3/8" MPT Elbow | 1/2" FL | | |
| FLAIR-IT DROP-EAR ELBOW | | | | | |
| | | | | Shower & tub connection. | |
| 24511 | #06801 | 1/2" FL | 1/2" FPT Drop Ear | | |
| FLAIR-IT SWIVEL ELBOW TERMINATION FITTINGS | | | | | |
| | | | | Nuts are included. Faucet connections. | |
| 24504 | #06807 | 3/4" P | 3/4" FPT Swivel | | |
| 28313 | #06816 | 1/2" P | 1/2" FPT Swivel BSP | | |
| 24601 | #06817 | 3/8" P | 1/2" FPT Swivel BSP | | |
| FLAIR-IT FEMALE SWIVEL TEE | | | | | |
| 24602 | #06821 | 1/2" FL | 1/2" FL | 1/2" FPT Swivel | |
| FLAIR-IT MALE TEE FITTINGS | | | | | |
| 24567 | #06822 | 1/2" FL | 1/2" FL | 1/2" MPT | |
| FLAIR-IT NUT WRENCH | | | | | |
| 25411 | #06390 | 3/8" | 1/2" | | |
| 25429 | LS #06391 | 1/2" | 3/4" | | |
| FLAIR-IT TEE FITTINGS | | | | | |
| 24491 | #06830 | 1/2" FL | 1/2" FL | 3/8" FL | |
| 24492 | #06820 | 1/2" FL | 1/2" FL | 1/2" FL | |
| 24494 | #06825 | 3/4" FL | 1/2" FL | 3/4" FL | |
| 24495 | #06827 | 3/4" FL | 3/4" FL | 3/4" FL | |
| 24565 | #06826 | 3/4" FL | 3/4" FL | 1/2" FL | |
| 24566 | #06831 | 3/8" FL | 3/8" FL | 3/8" FL | |
| FLAIR-IT COUPLING FITTINGS | | | | | |
| 24499 | #06853 | 3/8" FL | 1/2" FL | | |
| 24500 | #06840 | 1/2" FL | 1/2" FL | | |
| 24501 | #06845 | 1/2" FL | 3/4" FL | | |
| 24502 | #06846 | 3/4" FL | 3/4" FL | | |
| 24569 | #06855 | 3/8" FL | 3/8" FL | | |
| FLAIR-IT MALE PIPE ADAPTER FITTINGS | | | | | |
| 24505 | #06842 | 1/2" MPT | 1/2" FL | | |
| 24506 | #06872 | 3/4" MPT | 3/4" FL | | |
| 24575 | #06852 | 1/2" FL | 3/8" MPT | | |
| 24577 | #06867 | 1/2" FL | 3/4" MGHT | | |
| 24579 | #06870 | 3/8" FL | 1/2" MPT | | |
| FLAIR-IT COPPER TRANSITION | | | | | |
| | | | | Transition from copper to PB tubing. | |
| 25962 | #06343 | 1/2" | 1/2" Univ. Transition | | |
| 24583 | #06347 | 3/4" | 3/4" Univ. Transition | | |



FLAIR-IT FITTINGS

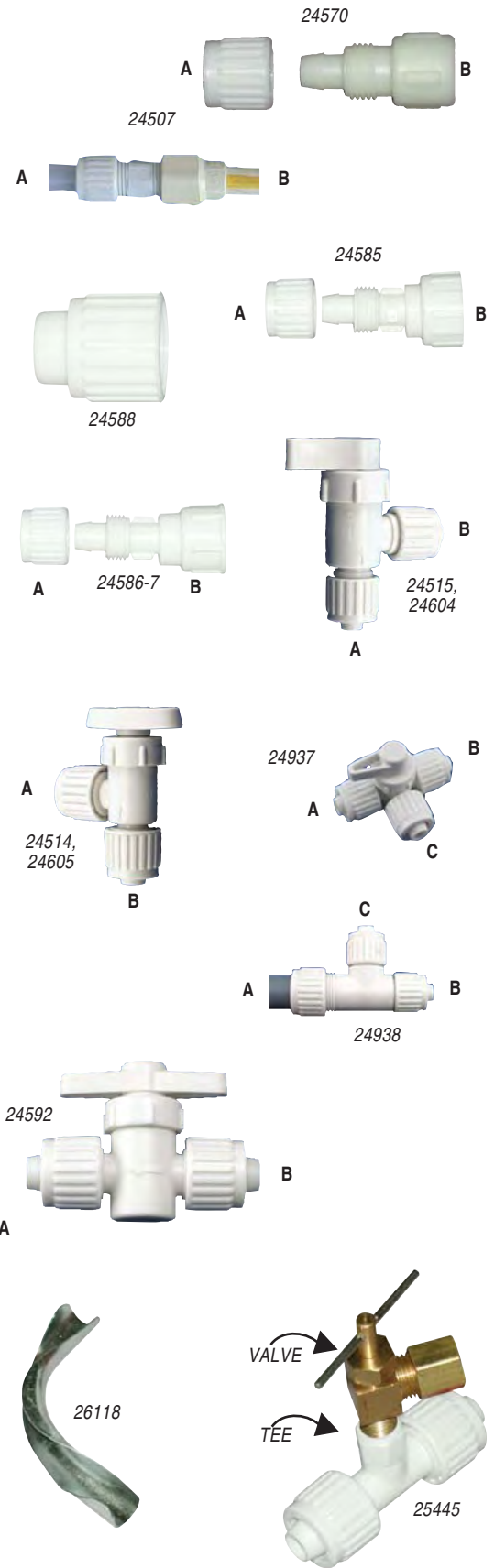
PLUMBING

L

In Section L: Fresh Water Line Filters Winterizing Pumps Faucet & Shower Sink & Drain Holding Tanks Drain Valves & Fittings Drain Hose Chemicals & Toilets

FLAIR-IT FITTINGS, continued

| Order # | Mfr. # | Dim. A | Dim. B | Dim. C | Price |
|--------------------------------------------------------------------------------------------------------------------------------------------------------------------------------------------------------------------------------------------------------------------------------------------------------------------------------------------------------------------------------------------------------------------------------------------------------------------------------|-----------|--------------|----------------------------------------------|-----------------------------------------------------------------------|-------|
| FLAIR-IT FEMALE ADAPTERS | | | | | |
| 24570 | #06841 | 1/2" FL | 1/2" FPT Adapter | | |
| 24571 | #06847 | 3/4" FL | 3/4" FPT Adapter | | |
| 24572 | #06851 | 1/2" FL | 3/8" FPT Adapter | | |
| 24574 | #06871 | 1/2" FL | 1/8" FPT (for refrigerator/ ice maker) | | |
| FLAIR-IT SWIVEL STRAIGHT TERMINATION FITTINGS | | | | Flair-It to faucet connection. | |
| 24507 | #06874 | 3/8" FL | 1/2" FPT BSP Swivel | | |
| 24508 | #06873 | 1/2" FL | 1/2" FPT BSP Swivel | | |
| 24509 | #06849 | 3/4" FL | 3/4" FPT Swivel | | |
| 24584 | #06856 | 1/2" FL | 3/4" FPT | | |
| FLAIR-IT PLUG-CAP | | | | Used for capping off a Flair-It fitting. | |
| 24588 | #06859 | 3/8" FPT Cap | | | |
| 24516 | #06860 | 1/2" FPT Cap | | | |
| 24517 | #06861 | 3/4" FPT Cap | | | |
| FLAIR-IT GARDEN HOSE ADAPTER | | | | | |
| 24585 | #06866 | 1/2" GHP | 3/4" FGH Swivel | | |
| FLAIR-IT BALLCOCK ADAPTER | | | | Flair-It connection to water closet. | |
| 24586 | #06865 | 1/2" FL | 3/4" BCT Swivel | | |
| 24587 | #06869 | 3/8" FL | 3/4" BCT Swivel | | |
| FLAIR-IT DRAIN OR ANGLE STOP VALVE | | | | Flair-It connections drain and angle valve. | |
| 24515 | #06884 | 1/2" FL | 1/2" FL | | |
| 24604 | #06882 | 3/8" FL | 3/8" FL | | |
| FLAIR-IT ANGLE STOP VALVE | | | | A 90° valve with flare connections both ends. | |
| 24514 | #06885 | 1/2" FL | 1/2" FL | | |
| 24605 | #06883 | 3/8" FL | 3/8" FL | | |
| FLAIR-IT THREE-WAY BYPASS VALVES | | | | 24937 is an in-line 3-way valve; 24938 is a water heater 3-way valve. | |
| 24937 | #06910 | 1/2" FL | 1/2" FL | 1/2" FL | |
| 24938 | #06912 | 1/2" FL | 1/2" MPT | 1/2" FL | |
| FLAIR-IT STRAIGHT STOP VALVE | | | | Flair-It connections in-line valve. | |
| 24592 | #06879 | 3/8" FL | 3/8" FL | | |
| 24512 | #06880 | 1/2" FL | 1/2" FL | | |
| FLAIR-IT ECONOMY 10-PACKS OF FITTINGS | | | | | |
| 24942 | #06435 | 1/2" | Saniprene Seals, 10/Bag | | |
| FLAIR-IT TURNING BEND SUPPORT | | | | | |
| 26118 | LS #10375 | 3/8" | Turning Bend Support | | |
| 26119 | #10500 | 1/2" | Turning Bend Support | | |
| FLAIR-IT INLET TEE & BRASS VALVE ASSEMBLY | | | | For refrigerator installation. | |
| Tee (1/2" P x 1/2" P x 1/8" FPT) is used to install refrigerators with polybutylene pipe. Connection to brass valve (1/4" x 1/8") ID NSF listed. To seal the connection between the valve and the tee, use teflon tape or liquid teflon. Do not use pipe dope or other materials not specifically recommended by the mfr. Threaded fitting must not be overly tightened. Every installation must be successfully leak-tested according to the industry's standards before use. | | | | | |
| 25445 | #05834 | | Inlet Tee/Brass Valve Assembly | | |





CLEAR VINYL TUBING

CLEAR VINYL TUBING

Flexible, non-toxic and resistant to corrosion, this clear flexible PVC tubing has a temperature grade of -25°-135°F. 1/16" wall. Boxed.

100 ft. Tubing:

- 21126** 3/8" I.D. x 1/2" O.D. #W01-1400 2
- 21127** 1/2" I.D. x 5/8" O.D. #W01-1600 6

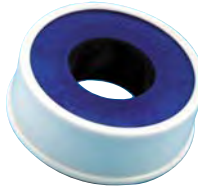
REINFORCED CLEAR PVC TUBING

Tubing has an open mesh nylon braid to withstand higher pressures. 1/8" wall.

- 25939** 1/2", 50 ft. #W01-1800 6
- 25940** LS US Only 5/8", 50 ft #W01-1900 1

PTFE TAPE FOR WATER FITTINGS

PTFE thread sealing tape, designed for sealing water and/or steam lines. 1/2" x 260".



- 21027** PTFE Tape #A05-0260 1

PLASTIC PIPE PLUG



- 21100** 3/8" Plug #70TP4006 1
- 21101** 1/2" Plug #70TP4008 1

PLASTIC TUBE CLAMP

Plastic Tube Clamp:



- 22523** 3/8" I.D.; #64H2 1
- 22524** 1/2" I.D.; #64H3 1
- 22525** 3/4" I.D.; #64H4 1

PLUMBER'S TAPE

Plumber's Tape, Coil:



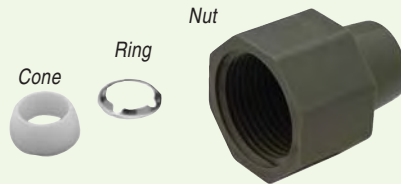
- 21178** 100 ft. #76PS10 6



PLASTIC PIPE & TUBING CUTTER

Kwikcut cuts flexible pipe up to 1 1/4" I.D. and semi-rigid pipe and conduit up to 1" I.D. with surgical quality stainless steel blade.

- 21706** Pipe/Tube Cutter #740125A 1



QEST NUTS, RINGS & CONES

BULK INDIVIDUAL PARTS

Bulk Set (one each: nut, ring & cone per poly bag); sizes are I.D. x O.D.:

- 21392** 1/4" x 3/8" #64QBFNCR1 1
- 21393** 3/8" x 1/2" #64QBFNCR2 1
- 21394** 1/2" x 3/4" #64QBFNCR3 1
- 20409** 3/4" x 1" #64QBFNCR4 25

BAGS OF INDIVIDUAL PARTS

Cone only:

- 21325** Bag/1, 3/4" I.D. #64QC4 1
- 25710** Bag/100, 3/8" I.D. #64QC2 1

Ring only:

- 25717** Bag/100, 3/8" I.D. #64QR2 1

QEST FITTING ADAPTER



A x B

- 21391** 3/4" M x 1/2" F #64QC43TF 1
- 20404** LS 1" M x 3/4" F #64QC54TF 1

QEST STREET ELBOWS



A x B

- 21380** 1/2" M x 1/2" F #64QSE33TF 1
- 21381** 3/4" M x 1/2" F #64QSE43TF 1

QEST DROP EAR ELBOWS



A x B

- 21379** 3/4" M x 1/2" F #64QDE43TF 1



QEST ELBOWS – BULK

Without nuts, cones or rings; sizes are A x B:

- 21373** 1/2" x 1/2" #64QE33T 1
- 21374** 1/2" x 3/8" #64QE32TX 1
- 21376** 3/4" x 3/4" #64QE44T 1
- 21377** 3/4" x 1/2" #64QE43T 1



QEST TEES – BULK

Without nuts, cones or rings; sizes are Ax BxC:

- 21367** 1/2" x 1/2" x 1/2" #64QT333T 1
- 21372** 1/2" x 1/2" x 3/4" #64QT334T 1
- 21371** 3/4" x 1/2" x 1/2" #64QT433T 1
- 21369** 3/4" x 3/4" x 1/2" #64QT443T 1
- 21368** 3/4" x 3/4" x 3/4" #64QT444T 1

QEST DRAIN VALVE ASSEMBLIES



Brass Drain Valve with Barb x Barb Fittings:

- 25903** 3/8" x 3/8" #49DV22X 1
- 25904** 1/2" x 1/2" #49DV33X 1



QEST MALE COUPLING – BULK

Without nuts, cones or rings; sizes are A x B:

- 21382** 1/2" x 1/2" #64QC33TX 1
- 21383** 1/2" x 3/8" #64QC32T 1
- 21385** 3/4" x 3/4" #64QC44T 1
- 21386** 3/4" x 1/2" #64QC43T 1
- 22140** 1" x 3/4" #64QC54T 25
- 20408** 1" x 1" #64QC55T 25



QEST CHECK VALVE

- 20395** 1/2" M x 1/2" M #642500 1

WATER LINE FITTINGS

PLUMBING

L

In Section L: Fresh Water Line Filters Winterizing Pumps Faucet & Shower Sink & Drain Holding Tanks Drain Valves & Fittings Drain Hose Chemicals & Toilets

QUEST FEMALE COUPLING



BULK FEMALE COUPLING

Without nuts, cones or rings; sizes are A x B:

21389 1/2" F x 1/2" F #64QC33F 1

21390 3/4" F x 3/4" F #64QC44F 1

QUEST TEST CAP



Test Cap:

21387 1/2" F #64RXPC3 1

21388 3/4" F #64RXPC4 1

QUEST TEST PLUG

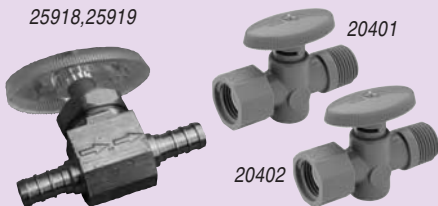


Test Plug:

23535 1/2" MPT #79STP3 1

23536 3/4" MPT #79STP4 1

25918,25919



QUEST STRAIGHT STOP VALVES

Straight Stop Valve:

20401 1/2" F x 1/2" M #64V401 1

20402 1/2" M x 1/2" M #64V411 1

PEX Valves with Barb Fittings (Barb x Barb):

25918 3/8" x 3/8" #49V466X 1

25919 1/2" x 1/2" #49PX10297 1

20398 20399

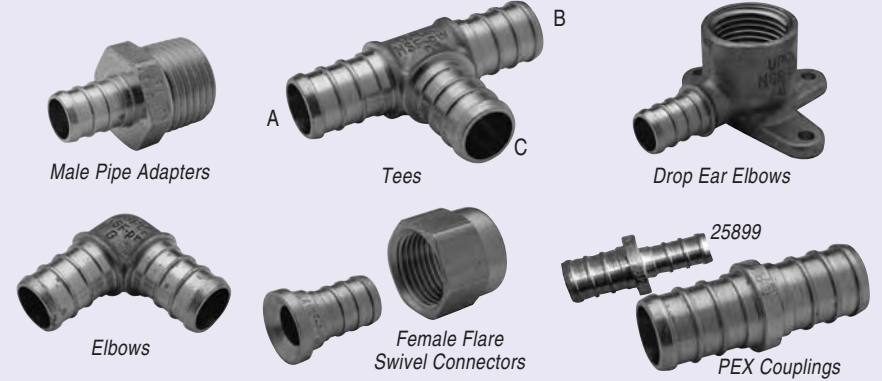
QUEST ANGLE STOP VALVES



Angle Stop Valve:

20398 1/2" F x 1/2" M #64V301 10

20399 1/2" M x 1/2" M #64V311 10



LASALLE BRISTOL QUICK/SERT II INSERT FITTINGS

QUICK/SERT II is a system utilizing compact fittings and crimp rings that offer excellent flow characteristics. Eliminates need for solvents, chemicals, solder. Fast, efficient installation with positive connections. Barb x thread fittings make transitions to threaded connections a simple matter.

* ORDER CRIMPING RINGS SEPARATELY.

PEX MALE PIPE ADAPTER

25910 1/2" MPT x 1/2" PEX #49PX81190 1

PEX ELBOW

25905 3/8" x 3/8" PEX Elbow #49E22X 1

25906 1/2" x 1/2" PEX Elbow #49PX80630 1

PEX TEE

25912 Barb Tee, PEX, A=3/8" B=3/8" C=3/8" #49T222X 1

25913 Barb Tee, PEX, A=1/2" B=1/2" C=1/2" #49PX80710 1

PEX FEM. FLARE SWIVEL CONNECTOR

25908 LS 3/8" Female Flare x 3/8" PEX #49FFC22X 1

25909 1/2" Female Flare x 1/2" PEX #49F12B44 1

PEX DROP EAR ELBOW

25902 LS 1/2" FPT x 1/2" PEX #49DE33BFX 1

PEX COUPLING

PEX Coupler Center-Set Termination:

25899 1/2" x 3/8", Reducer #49C32X 1

25898 3/8" x 3/8" #49PX80500 1

25900 1/2" x 1/2" #49PX80520 1

25901 3/4" x 3/4" #49C44X 1

QUEST GLOBE VALVE



22149 3/4" M x 3/4" M #64V3750 10

LASALLE BRISTOL PEX FITTINGS

PEX tubing and fittings are replacing many of the polybutylene tubing and related fittings. The "Nut, Ring & Cone" fittings will work on either system, but the barb fittings will not.

Brass Repair Couplings, PEX Barb x Poly Barb:

25921 1/2" #49PX02283 12

LASALLE BRISTOL BEVELED WASHERS

Beveled rubber washer with 3/8" hole, for standard center-set connection. Beveled rubber washer with 1/2" hole is for center-set connection and for toilet connection.

Beveled Washers, Bag of 100:

25720 3/8" Hole #64WA39 10

25719 1/2" Hole #64WA35 1



VALTERRA PIPE x BARB UNION FITTING

Pipe x Barb Union Fitting, MPT x Barb (B):

21848 3/8" MPT x 1/4" B #70TA1064 1

21074 LS 3/8" MPT x 3/8" B #RF834 25

21075 3/8" MPT x 1/2" B #RF840 25

21076 LS 3/8" MPT x 5/8" B #RF878 5

21077 1/2" MPT x 3/8" B #RF883 25

21078 1/2" MPT x 1/2" B #RF841 25

21079 1/2" MPT x 5/8" B #RF880 25

21081 1/4" MPT x 3/8" B #RF850 5

21082 LS 1/4" MPT x 1/2" B #RF847 5

L PLUMBING FITTINGS • CHECK VALVES • WATER FRESHENERS

In Section L: Fresh Water Line | Filters | Winterizing | Pumps | Faucet & Shower | Sink & Drain | Holding Tanks | Drain Valves & Fittings | Drain Hose | Chemicals & Toilets



VALTERRA BARB FITTINGS

For clear vinyl tubing. *Barb x Barb Union*

Barb x Barb Elbow Fitting:

- 21060** 3/8" x 3/8" #RF854 25
- 21061** 1/2" x 1/2" #RF844 25

MPT x Barb Elbow Fitting:

- 21065** 1/4" MPT x 3/8" Barb Elbow #RF851 5
- 21066** 3/8" MPT x 3/8" Barb Elbow #RF835 25
- 21067** 3/8" MPT x 1/2" Barb Elbow #RF842 25
- 21068** LS US only 3/8" MPT x 5/8" Barb Elbow #RF877 5
- 21069** 1/2" MPT x 3/8" Barb Elbow #RF882 25
- 21070** 1/2" MPT x 1/2" Barb Elbow #RF846 25
- 21071** LS 1/2" MPT x 5/8" Barb Elbow #RF881 25

Barb x Barb x Barb Tee Fitting:

- 21086** 3/8" x 3/8" x 3/8" #RF852 25
- 21087** 1/2" x 1/2" x 1/2" #RF843 25

MPT x Barb Tee Fitting:

- 21092** 1/2" MPT x 1/2" Barb x 1/2" Barb Tee #RF849 25

Barb x Barb Union Fitting:

- 21119** 3/8" x 3/8" #RF855 25
- 21120** 1/2" x 1/2" #RF845 25
- 21123** 1/2" x 3/8" #RF885 25



AQUA PRO CHECK VALVES

Direct replacement for Marshall Brass and for Hydronamic Products. Aqua Pro models are made of non-toxic, food-grade materials, have 1/2" pipe thread, and are certified to IAPMO and NSF standards.

Aqua Pro Check Valve, 1/2" MPT x 1/2" MPT:

- 27915** Bulk #27915 1
- 27916** CD/1 #27916 1

Aqua Pro Check Valve, 1/2" MPT x 1/2" FPT:

- 27871** Bulk #27871 1
- 27879** CD/1 #27879 1



ATTWOOD CHECK TEES

A combination check valve and tee eliminates additional connections normally required for RV and marine hook-ups. A normal system requires 11 pieces; a Check-Tee needs only a Tee plus two hose clamps. IAPMO approved.

1/2" NPT inlet for city water connection. Inlet and outlet are barbed to accommodate 3/8" hose, or barbs may be removed for a 1/4" NPT.

- 21724** Check Tee with Two Barbed Ports #6115-1 6

1/2" NPT for city water connection. Inlet is barbed to accommodate 3/8" hose, or barbs may be removed for 1/4" NPT. 1/2" NPSM outlet.

- 21725** Check Tee #6115A1 6



THETFORD FRESH WATER TANK SANITIZER KIT

- Kills 99% of harmful bacteria - Staph, E-coli, Listeria and other micro-organisms - within 60 seconds!
- Non-additive - sanitizes inside of tank and plumbing, not the water.
- Free of bleach and chlorine.
- Leaves no smell or taste.
- EPA Registered in all 50 States! First registered sanitizer for fresh water tanks and hoses.

- 28380** Fresh Water Tank Sanitizer Kit #36662 4

VALTERRA ANTI-SIPHON VALVE



This removable plastic anti-siphon valve is a spring-loaded check valve that stops the back flow of water into the fresh water supply. You can simply screw it on and off when attaching the water line to the faucet.

- 25941** Plastic Anti Siphon Valve, Carded #A01-0141VP 30



OP PRODUCTS WATER FRESH

Keeps water tasting fresh while stored in plastic or metal. Eliminates bad taste and odors that originate in fresh water holding tanks.

- 41753** Water Fresh, 8-oz. #03066 12

VALTERRA DRINKING WATER FRESHENER



This concentrated formula works fast to eliminate tastes and odors associated with anti-freeze, chlorine, plastic and metal tanks, or just about anything that leaves water stale or musty. Chlorine-free, non-toxic and environmentally-safe. No pre-cleaning or rinsing necessary. Use in refrigerators, trash cans and coolers to stop odors. 12-oz. bottle.

- 28011** Drinking Water Freshener #V88459 12

In Section L: Fresh Water Line Filters Winterizing Pumps Faucet & Shower Sink & Drain Holding Tanks Drain Valves & Fittings Drain Hose Chemicals & Toilets



FLOW-PUR® ULTIMATE DUO EXTERIOR FILTER

Equipped with garden hose fittings to install outside of RV/Boat to water hose. Cartridges #7 & #5 are included with housing wrench. Tested to remove 99.9% cryptosporidium and giardia cysts, reduces bacteria, sediment, chlorine and unpleasant taste & odors. Flow rate 2.5 gpm.

28181 Filter, Ultimate Duo
#POE12DSA1KDF 4

SINGLE EXTERIOR FILTER

Equipped with garden hose fittings to install outside of RV/Boat to water supply hose. Cartridge #8 included with housing wrench. Cartridge reduces chlorine, sediment and unpleasant taste & odors. Flow rate 2.5 gpm.

28180 Filter, Single #POE12GHGACB 12

FILTER HOUSING WRENCH

28185 Housing Wrench #WR-100 12

O-RING

28453 O-Ring, for use with 28181 & 28180
#OR-4 1

FLOW-PUR® UNDERCOUNTER FILTER KIT

Undercounter filter kit using the combination KDF and Activated Carbon media for bacteria, chlorine, Voc's and unpleasant taste and odor reductions. Kit includes filter with 1/2" threaded fittings attached, 2 quick-connect cold water line fittings, winterizing by-pass hose and bracket. Easy install.

28274 Complete Under Counter Filter Kit
#FP10GKTUC 12



FLOW-PUR® RV/BOAT REPLACEMENT FILTERS

#1 FILTER—Inline replacement filter with 1/2" threaded fittings. Fits many OEM applications. Reduces sediment, chlorine and unpleasant taste & odors.

28176 #1 Filter #FP10GT 12

#2 FILTER—Inline replacement filter with quick connect inserts. Fits many OEM applications. KDF media in filter to reduce bacteria growth, chlorine and unpleasant taste & odors.

28177 #2 Filter #FP10GKC 12

#3 FILTER—Inline replacement filter with 1/2" threaded fittings. Fits many OEM applications. KDF media in filter to reduce bacteria growth, chlorine and unpleasant taste & odors.

28178 #3 Filter #FP10GKT 12

#4 FILTER—Inline replacement filter with John Guest quick-connect fittings. Fits many OEM applications. KDF media in filter to reduce bacteria growth, chlorine and unpleasant taste & odors.

28276 Repl. Filter #FP10GKJ 12



28183

28184

28182

#5 FILTER—Replacement GAC/KDF filter cartridge for Flow-Pur® ultimate system. Filter is long lasting, reduces bacteria, chlorine, taste & odor. Cartridge interchanges with other brand #5 cartridges.

28183 #5 Filter #GAC10N/KDF-RV 12

#7 FILTER—99% cyst reduction sediment filter cartridge with flow rate of 3 gpm. Replacement cartridge for Flow-Pur® ultimate system and fits most name brand housings.

28184 #7 Filter #FM-1A-975-RV 12

#8 FILTER—Coconut shell carbon block cartridge for Flow-Pur® interior & exterior water filter system. Filter cartridge reduces chlorine, sediment, unpleasant taste/odor & Voc's. Fits most brand housings. Flow rate 2 1/2 gpm.

28182 #8 Filter #WCBCS975RV 12

HOUSING & CARTRIDGE

28213

FH4200WW12 - 10" replacement Filter Housing with cap and 1/2" FPT. Replaces housings installed by OEM's, usually under the counter or as POE (Point Of Entry). 100% polypropylene, rated at 125 psi and 125°F/ 52°C degrees. White only.

28213 Replacement 10" Housing w/Cap
#FH4200WW12-RV 12

MAXVoc-975 - Coconut shell carbon block replacement cartridge, 0.5 micron. Reduces Voc's, cysts and extended chlorine, taste and odor reduction. Fits all 10" Flow-Pur® and other brands of standard housings.

28179 Filter Cartridge 0.5 Micron
#MAXVOC-975RV 12

O-RING

28453 O-Ring, for use with 28213
#OR-4 1



FLOW-PUR® INLINE EXTERIOR #12 FILTER



Inline exterior filter using combination KDF and Activated Carbon media for bacteria, chlorine, Voc's and unpleasant taste and odor reduction. Equipped with garden hose fittings to install outside RV or boat to water hose. Filter includes flexible non-kinking hose. Flow rate 2.5 gpm.

28275 #12 Filter: Exterior Inline Garden Hose
#FP12GKE 12

CULLIGAN DISPOSABLE EXTERIOR RV DRINKING WATER FILTERS



MODEL RV-600A

Convenient and easy to use, model RV-600A is a disposable exterior filter for drinking and cooking water. It also filters dirt and sediment to keep your storage tank clean and clear. For use with 3/4-inch flexible hose couplings in RV or Marine applications. Provides high flow rate for quick tank fill. Model RV-600A includes single hose and plastic plugs. Model RV-500A includes filter cartridge only (no hose) and can be used as the replacement cartridge for the RV-600A. Cartridge life of 2,000 gallons/1 season.



Model RV-500A or RV-600A NSF Independently certified to reduce:

- Bad taste & odor
- Aesthetic Chlorine taste & odor
- Sediment

24538 RV-600A Filter with Hose #01019082

Replacement Cartridge:

24537 RV-500A Cartridge #01019083

MODEL RV-800 WITH BACTERIOSTATIC MEDIA

Convenient and easy to use, model RV-800 is a disposable exterior filter for drinking and cooking water. It also filters dirt and sediment to keep your storage tank clean and clear. This filter contains *KDF***. *Bacteriostatic** indicates that the system limits the passage or growth of bacteria that may already exist in the incoming water. It does not mean that the water leaving the system is safer than that of the water entering the system. For use with 3/4-inch flexible hose couplings in RV or Marine applications. Provides high flow rate for quick tank fill. Model RV-800 includes filter cartridge, single hose and plastic plugs. Model RV-700 includes filter cartridge only (no hose) and can be used as the replacement cartridge for the RV-800. Cartridge life of 2,000 gallons/1 season. **KDF as tested by KDF Fluid Treatment, Inc.



Model RV-800 or RV-700 NSF Independently certified to reduce:



- Bad taste & odor
- Aesthetic Chlorine taste & odor
- Sediment
- Bacteriostatic*

28598 RV-800 Filter with Hose #01020342

Replacement Cartridge:

28597 RV-700 Cartridge #01020341

MODEL RVF-10 CULLIGAN EXTERIOR RV DRINKING WATER FILTER



25625

28754

The sturdy design of model RVF-10 makes it ideal for exterior filtration of water for your RV. Enjoy better-tasting water and cleaner storage tank with this quality filter. The slim design and convenient hose fitting kit make it simple to install and easy to store. Includes hose connection kit and model D-15 replacement cartridge, with a life of 250 gallons or 3 months. See chart for other RVF-10-compatible cartridge. 5-yr limited warranty.

Models D-15 cartridge reduces:

- Bad taste & odor
- Aesthetic Chlorine taste & odor
- Sediment

25625 RVF-10 Water Filter #01019084

Replacement Cartridge:

28754 D-15 Cartridge, Pk/2 #01019061

27970 P5 Cartridge, Pk/2 #01019128



28753

28752



MODEL ISH-100 IN-LINE SHOWER FILTER

Designed to make a good shower even better, Culligan's in-line shower filter is perfect for the consumer who prefers his or her existing showerhead but has concerns about the water coming from that showerhead.

Model ISH-100 reduces:

- Chlorine
- Sulfur odor
- Scale

28752 ISH-100 Shower Filter #01019101

Replacement Cartridge:

28753 WHR-140 Cartridge #01019105



NSF is the world leader in water standards development and product certification.

NSF utilizes a professional staff of third party independent engineers, chemists, toxicologists and environmental health professionals. Your health is important. Be aware of the facts. NSF International www.nsf.org



MODEL US-600A CULLIGAN UNDER-SINK DRINKING WATER FILTER

Let your tap be the source for clear, clean great-tasting water wherever the road takes you. Model US-600A employs a slim design to fit into tight places for easy installation. Uses quick-connect fittings to attach to faucet. Includes mounting bracket, housing wrench, 1/4 inch plastic tubing and model D-20A drinking water cartridge. See chart for other US-600A-compatible cartridges. Model D-20A cartridge has a life of 1,000 gallons or 12 months. The US-600A has a 5-yr limited warranty.



NSF Independently certified with D-20A cartridge to reduce:

- Bad taste & odor
- Aesthetic Chlorine taste & odor

26122 US-600A Water Filter #01020691 *6*

NSF Certified Replacement Cartridges:

25767 D-20A Repl. Cartridge #01020696 *12*

25769 D-30A Repl. Cartridge #01020635 *12*

21494 D-10 Repl. Cartridge, Pkg/2 #01019060 *6*

25937 D-40A Repl. Cartridge #01020636 *6*



| Order # | 21494 | 25767 | 25769 | 25937 | 27970 | 28754 |
|---------------------------------|-------------------|-------------------|-------------------|-------------------|--------|------------|
| Culligan cartridge model: | D-10 | D-20A | D-30A | D-40A | P5 | D-15 |
| Used with Culligan filter: | US-600A RVF-10 | US-600A RVF-10 | US-600A RVF-10 | US-600A RVF-10 | RVF-10 | P5 D-15 |
| NSF - certified | yes | yes | yes | yes | n/a | yes |
| Bad taste & odor | • | • | • | • | | • |
| Aesthetic Chlorine taste & odor | • | • | • | • | | • |
| Lead | | | | • | | |
| Sediment | • | • | • | • | • | • |
| Cryptosporidium & Giardia | | | • | • | | |
| Mercury | | | | • | | |
| Lindane & Atrazine | | | | • | | |
| Filter life in Gallons | 250 | 1,000 | 1,000 | 600 | 8,000 | 250 |

FLOW-PUR® PORTABLE WATER SOFTENER



Limestone (Calcium) and magnesium salts in the natural water supply make up "Hard Water". The additional salts and minerals in hard water require more soap to accomplish simple cleaning tasks including laundry, dishes and bathing. Over time hard water will create scale deposits in hard to reach plumbing and expensive appliances, potentially reducing your water flow and the ability to efficiently heat water in your hot water heater or coffee pot.

- Operating pressure from 25 psi to 120 psi.
- Operating temperature from 35°F to 120°F.

Features: • Compact size (17"H x 11" W x 11"L); • Regenerate softener with a single valve; • 20 lb. capacity brine tank; • Portable; • 4,800 total grain removal capacity; • Flow-Pur® quality; • Proven exchange technology.

Benefits: • Healthy skin and scalp; • Smoother shave; • Save on soaps and detergents; • Brighter softer laundry; • More efficient appliances; • Simple to use; • Easier to maintain.

28402 Portable Water Softener #M-7001 *1*





EVERPURE by SHURflo WATER TREATMENT SYSTEM

Get cleaner, clearer water anywhere on the road with Everpure by SHURflo's Water Treatment System. The recommended superchlorination/dechlorination method disinfects your RV's entire water distribution system and can protect you from waterborne bacteria, viruses, mold and algae. The exclusive Micro-Pure® filter considerably reduces the taste and odor of chlorine, dirt, rust, cysts and asbestos. Certified by NSF International. Includes a QL3-ADC filter with disposable "Quick-Change" Filter Cartridge, mounting bracket, liquid chlorine dispenser, chlorine test kit, anti-freeze diverter, all fittings (one each: 3/8" PVC threaded elbow, straight, and tube-to-tube connector fittings) and tubing for installation. Simplify winterizing procedures using the diverter in place of the cartridge. In springtime, flush your system with the diverter in place. Then, install a new water filter cartridge.

20613 Everpure Water Treatment System #EV925205 6

25294 Antifreeze Diverter #EV300817 1

EVERPURE by SHURflo ADC "QUICK-CHANGE" FULL-TIMER CARTRIDGE

Fits all Everpure Water Treatment Systems. Exclusive Micro-Pure® filter considerably reduces the taste and odor of chlorine, dirt, rust, cysts and asbestos for about one season. Replacement is as easy as changing a light bulb. Requires no tools. Performance certified by NSF International.



20614 ADC Bacteriostatic Cartridge #EV959206 6



GARDEN HOSE CONNECTION IN-LINE FILTER

SHURflo uses only the highest quality KDF media and Coconut Shell Carbon to significantly reduce bacteria, chlorine, hydrogen sulfide, water-soluble heavy metals and microorganisms, providing you crisp, clean and safe drinking water. Connects directly to Garden Hose for Point of Entry Filtration.

28337 Garden Hose Filter #RV-210GH-KDF-A 12



SUPER PREMIUM REPLACEMENT IN-LINE FILTER – (Universal Adaptation)

SHURflo uses only the highest quality KDF media and Coconut Shell Carbon to significantly reduce bacteria, chlorine, hydrogen sulfide, water-soluble heavy metals and microorganisms, providing you crisp, clean and safe drinking water. Replaces all SHURflo 6" and 10" filters, as well as all competitive brands. (1/4" FPT, 1/2" MPT, John Guest and Colder fittings included).

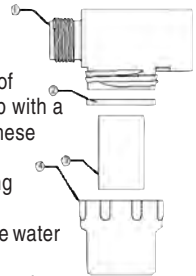
28339 Universal Filter Kit #94-009-50 12



SHURflo TWIST-ON WATER STRAINERS

Protect the performance of your SHURflo water pump with a twist-on water strainer. These easy-to-install strainers prevent debris from fouling pump valves. **TYPICAL APPLICATIONS:** • Potable water pump debris strainer.

• Vacuum side application only. **MATERIALS:** • Top Housing (1) is in polypropylene; • Bowl (4) is in nylon; • Gasket (2) is in EPDM; • Screen (3) is in 50 Mesh T304 Stainless Steel. **SPECIFICATIONS:** Inlet Port: 1/2" NPSM [Male] or 1/2" Barb; Outlet Port: 1/2" Female; Max Temp.: 120°F [48°C]; Max Press.: Vacuum Side Only. **APPROVALS:** IAPMO [Meets NSF 61]. **WARRANTY:** 1 Year Limited Warranty. See SB-1041 & SB-1050 for Full Warranty Details.



Twist-On Water Strainer:

28400 1/2" Pipe Inlet #255-313 24

28401 1/2" Barb Inlet #255-323 24



SHURflo IN-LINE STRAINER



Transparent in-line feature provides a quick, easy visual check of the strainer. If cleaning is required, it takes only seconds. Includes hose clamps. Fits 1/2" plastic tubing, hose, or pipe.

20444 Strainer #170-010-09 24

PAR IN-LINE STRAINER

Pumpgard in-line strainer prevents dirt and other particles from entering pump intake. Just remove one screw for in-place cleaning.



In-Line Strainer:

741369 1/2" Barb Port #46400-0002 1

20537 1/2" MPT #46400-0004 12

741368 3/4" Barb Port #46200-0000 1

| | | | | | | | | | | |
|---------------|------------------|---------|-------------|-------|-----------------|--------------|---------------|-------------------------|------------|---------------------|
| In Section L: | Fresh Water Line | Filters | Winterizing | Pumps | Faucet & Shower | Sink & Drain | Holding Tanks | Drain Valves & Fittings | Drain Hose | Chemicals & Toilets |
|---------------|------------------|---------|-------------|-------|-----------------|--------------|---------------|-------------------------|------------|---------------------|



SHURflo SWIVEL NUT WATER STRAINERS

WITH 1/2" [13MM] INLET, 50 MESH STAINLESS STEEL SCREEN

Designed for safety and convenience, SHURflo strainers are built to last. This clean, clear economical strainer eliminates unnecessary repairs by keeping debris and other particles out of the pump. Swivel nut design allows easy installation directly onto the inlet side of the pump head. The transparent bowl allows you to visually see when strainer needs cleaning. Easy assembly, cleaning and reassembly. 1-yr. Warranty.

- Swivel nut allows for ease of installation to pump inlet.
- Clear, clean plastic construction
- Keeps debris out of pump.
- Disassembles for easy cleaning.
- Available for all SHURflo demand pumps with 1/2" MPT threads.

Swivel Nut Water Strainer Pipe:

20115 Pipe Inlet #255-315 24

20118 Barb Inlet #255-325 24

BECKSON "THIRSTY MATE" HAND LIQUID PUMP

Made of vinyl, no rust, no corrosion. Self-priming, easy to clean. With flexible hose. 1 1/4" dia. x 18" L, 4 strokes/quarter, with 24" hose.

738229 ^{LS} Thirsty Mate Pump #118PF 10



SEE PAGES 236-237 FOR WATER HEATERS



FLOW-PUR® PRODUCTS

ECONOMICAL EXTERIOR WATER FILTER

Designed for the weekend or occasional camper

Granulated Activated Carbon Filter reduces:

- Chlorine
- Volatile Organic Chemicals
- Taste and Odor
- Sediment

Working Pressure: 20 - 120 psi
Max Flo Rate: 2.5 gpm
Do not use where water is microbiologically unsafe or of unknown qualities.

28703 Exterior Inline Carbon Filter #FP12GE-RV 12



WINTERIZING BYPASS HOSE

12" Winterizing bypass hose fits all inline water filters with 1/2" threaded fittings for purpose of winterizing fresh water systems with inline filters.

28781 170TF Winterizing Bypass Hose #WBPH 12



WINTERIZING BYPASS PLATE

The new Flow-Pur Winterizing Bypass Plate makes winterizing your water filtration system as easy as 1-2-3! Fits all standard 10" and 5" housings. Eliminates filling housing with antifreeze. Economical stainless steel plate will last forever. Gasket included.

28741 Winterizing Bypass Plate #FP-WP100 12



JR PRODUCTS BLOW-OUT PLUG



For removal of water from lines in RVs and mobile homes. Plastic.

41280 Blow-Out Plug #03054 1



SHURflo DRILL PUMP



Easy to use; 1/4" shaft fits standard drill. Self-priming to 8 feet vertical, 25 feet horizontal. Pumps liquids 40°F-120°F. 3/4" male garden hose ports. Buna impeller and lip seal.

Attaching to any standard drill motor, the drill pump has a variety of fluid transfer uses. Ideal to pump water from appliances, sinks, toilets, or drums. 1/4" oil probe easily allows the transfer of oil from cars, boats, small engines and equipment. Not intended for use with flammable liquids or in flammable environments.

25948 Drill Pump #3010-000 6

NON-TOXIC RV ANTI-FREEZE

Non-toxic antifreeze protects fresh water plumbing system on trailer or boat. Made of propylene glycol. 1 gallon containers.

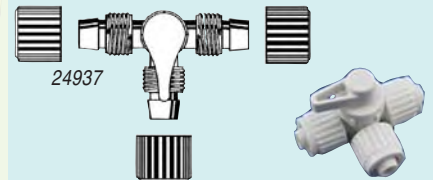


Non-Toxic -50° Anti-Freeze:

24181 30% Propylene Glycol. Cannot be Diluted (Image may differ; Not available in Canada) #STA-SAFE -50 ONE 6

Made of Ethanol, 3.78L Containers:

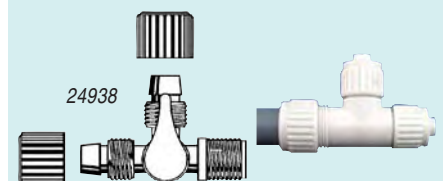
25891 -50°C, Ethanol Base, Cannot be Diluted #15-334 4



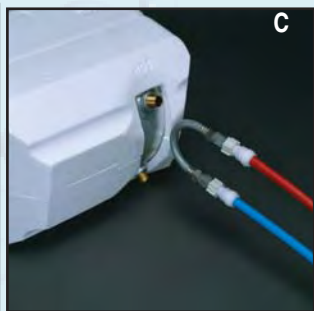
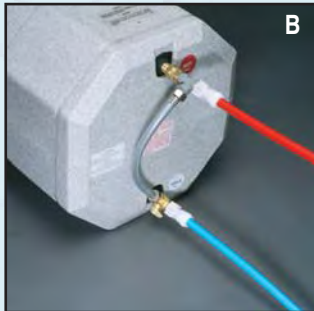
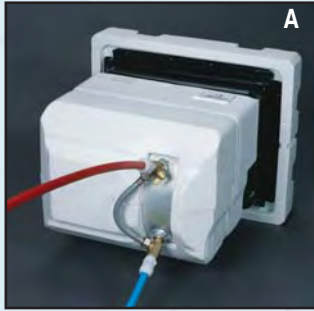
FLAIR-IT BYPASS VALVES

For a fast, easy, economical water heater by-pass antifreeze system. Valves need not be installed on the water heater and can be installed in proximity to the water heater in the line.

24937 3-W Valve, 1/2" FL x 1/2" FL x 1/2" FL #06910 10



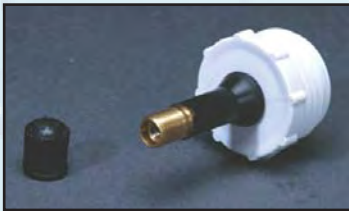
24938 3-W Valve, 1/2" FL x 1/2" MPT x 1/2" FL #06912 10



A Permanent by-pass kits are available in 8" (27909) and 12" (27911) sizes. They are permanently installed to allow simple tank isolation, annually.

B The single valve kit (27912) is permanently installed to allow simple tank isolation, annually, using a single valve. This is for areas where access to valves may be limited.

C The temporary by-pass kit (27913) completely isolates the water heater from the system, to save anti-freeze during the winterization process.



The blow-out plug (27898) has no valve, and is to be used for draining water lines. The blow-out valve (21363) does have a valve, and can be used for draining water lines, as well as for leak tests.



The siphon kit (27910) allows you to easily divert the pump intake from the RV tank to an anti-freeze bottle for easy winterizing.



AQUA PRO WINTERIZING KITS

PERMANENT WATER HEATER BY-PASS KITS

Aqua Pro Winterizing kits make preparing your RV or boat for winter storage a breeze. All components are made of the highest quality, food-grade, non-toxic materials for trouble-free winterization. Aqua Pro kits let you by-pass the water heater when winterizing water lines to save anti-freeze.

These kits feature 1/4 turn valves to quickly and easily bring water heater back "on line."

- 27909** 8" Permanent By-Pass Kit for 6-Gal. #27909 24
- 27911** 12" Permanent By-Pass Kit for 10-Gal. #27911 24
- 27912** 12" Single Valve By-Pass Kit #27912 24

8" TEMPORARY WATER HEATER BY-PASS KIT

- 27913** 8" Temporary By-Pass Kit #27913 48

WATER SYSTEM SIPHON KIT

Made of non-toxic components. Quickly diverts pump intake to anti-freeze bottle for winterizing water lines.

- 27910** Water Siphon Kit #27910 48

COMPLETE BLOW-OUT PLUG

Complete blow-out plug for standard garden hose threads holds pressure to help find leaks. Aids in the removal of water from lines.

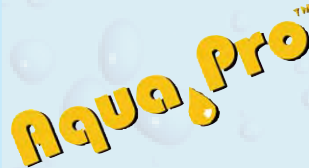
- 21363** Complete Blow-Out Plug #21363 10

WATER LINE DRAINER BLOW-OUT PLUG

Water line drainer blow-out plug for standard garden hose threads does not hold pressure. Aids in the removal of water from lines.

- 27898** Blow-Out Plug w/o Valve #27898 20

WINTER PROTECTION = SUMMER FUN



AQUA PRO BLOW-OUT PLUGS

27898 Blow-out plug allows air pressure to be applied, to assist in draining water line. Does not "hold" pressure. **21363** Blow-out valve will hold pressure to check for leaks and/or to assist in draining water lines.

- 27898** Aqua Pro Blow-Out Plug, CD/1 #27898 20
- 21363** Aqua Pro Blow-Out Valve, CD/1 #21363 10



AQUA PRO HAND PUMP KIT

Freeze-proof your water system the quick and easy way. Pump antifreeze into lines and supply tank through the city water inlet; use pump for many other liquid transfer needs.

- 21364** Hand Pump Kit #P21364 12